



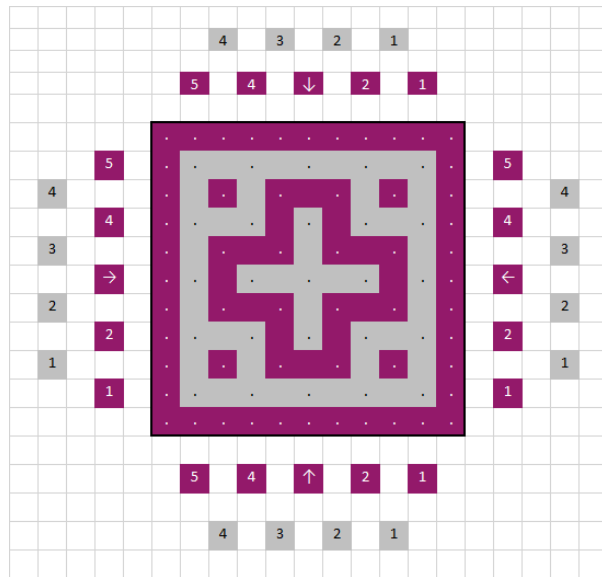
## Log Cabin - Les Petits patrons (Hooked and Locked Cal 2021) in Interwoven Crochet technique Blocks 1 to 5



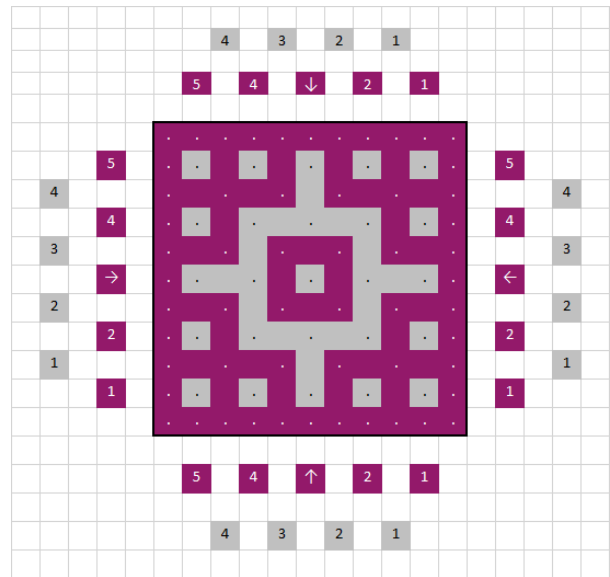
It is not allowed to copy this pattern or share this, digitally or in print, with others without my explicit permission. This is for private use only. The pattern charts, the description and all pictures are the property of Anneke Perelaer-van Komen, aka The Craftsteacher aka De Handwerkjuf. Please respect the work I did!  
Disclaimer: I am not responsible for any damage as a result of errors in the pattern.



## Block 1



front



back

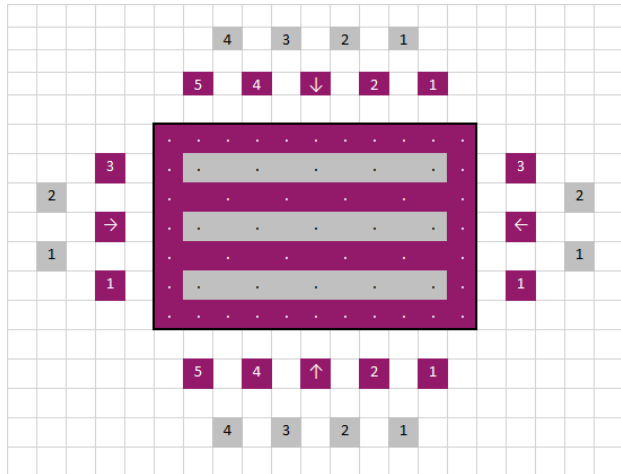
See the photo tutorial on the website to guide you through the steps:

<https://www.thecraftsteacher.com/en/crochet/hooked-and-locked-cal-2021/hooked-and-locked-cal-2021-part-1a-the-middle-block/>.

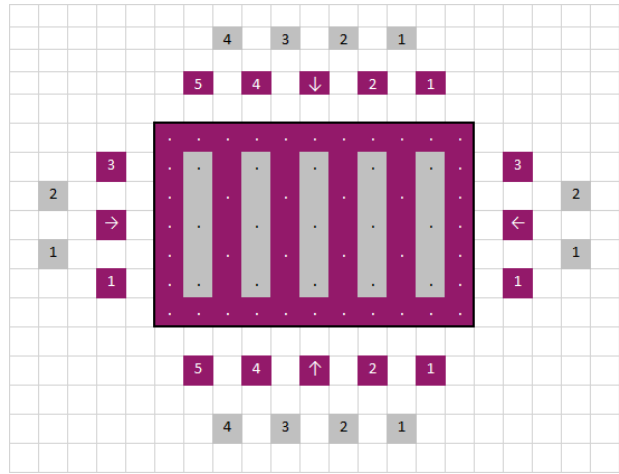
Row 0a	setup 11 st
Row 0b	setup 9 st
Row 1a - front	color 2 to front, side st, b 4x, side st
Row 1b - front	f 2x, b 1x, f 2x
Row 2a - back	color 2 to back, side st, f 1x, b 2x, f 1x, side st
Row 2b - back	*(b 1x, f 1x)* 2x, b 1x
Row 3a - front	color 2 to front, side st, f 1x, b 2x, f 1x, side st
Row 3b - front	*(f 1x, b 1x)* 2x, f 1x
Row 4a - back	color 2 to back, side st, f 1x, b 2x, f 1x, side st
Row 4b - back	b 2x, f 1x, b 2x ( <b>don't cut of the yarn yet</b> )
Row 5a - front	color 2 to back, side st, b 4x, side st
low border in color 2	Now make a low border around the block. Look at the photo tutorial on the website how to do that.



## Block 2



front



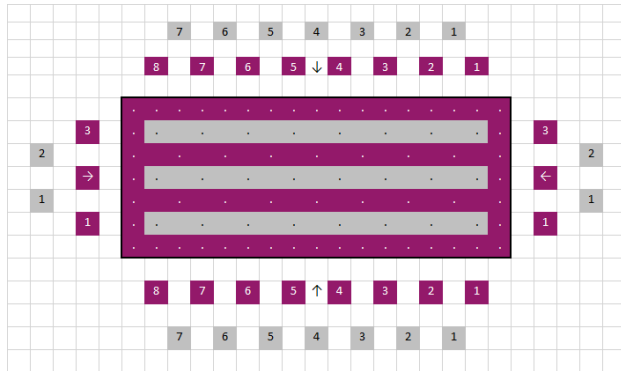
back

color 2 first row	Place the work with the back side up, the color 1 yarn is at the top left. 5 BPdc starting at the back in front of color 1.
Row 1a - front	*** color 2 to back, side st, b 4x, side st
Row 1b - front	b 5x
Row 2a - back	color 2 to front, side st, f 4x, side st
Row 2b - back	f 5x (cut of the yarn)
Row 3a - front	color 2 to back, side st, b 4x, side st
low border in color 2	Place the work with the front side up. Start at the right side of this block. Crochet 2 BPhdc's at the sides (first one is a standing BPhdc) and 3 BPhdc's at the top all with a chain in between. Make sc's and 2 chains in between at the corners. See the tutorial. Cut the yarn. <b>Connect the yarn ends</b> to the corners of the blocks beside them before working them into the work invisibly. See the tutorial.

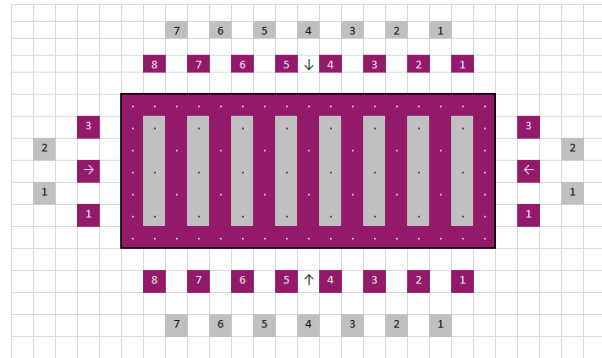
\*\*\* do BPdc's after the side st and end with a regular dc for the last side st



## Block 3



front



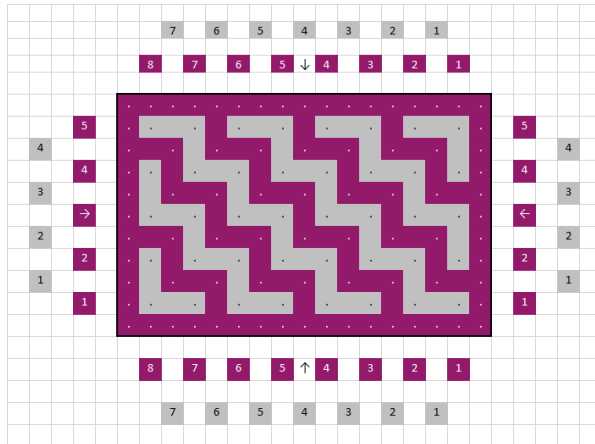
back

color 2 first row	Place the work with the back side up, the color 1 yarn is at the top left. 8 BPhdc (5 across color 2A of block 1, 3 across color 2B of block 2) starting at the back in front of color 1.
Row 1a - front	*** color 2 to back, side st, b 7x, side st
Row 1b - front	b 8x
Row 2a - back	color 2 to front, side st, f 7x, side st
Row 2b - back	f 8x
Row 3a - front	side st, b 7x, side st
low border in color 2	Place the work with the front side up. Start at the right side of this block. Crochet 2 BPhdc's at the sides (first one is a standing BPhdc) and 6 BPhdc's at the top all with a chain in between. Make sc's and 2 chains in between at the corners. See the tutorial. Cut the yarn. <b>Connect the yarn ends</b> to the corners of the blocks beside them before working them into the work invisibly. See the tutorial.

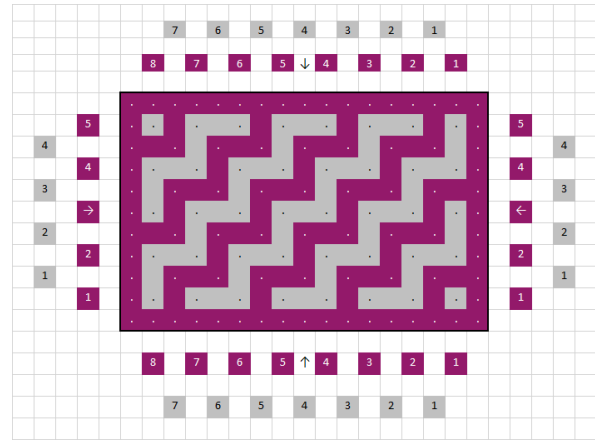
\*\*\* do BPhdc's after the side st and end with a regular dc for the last side st



## Block 4



front



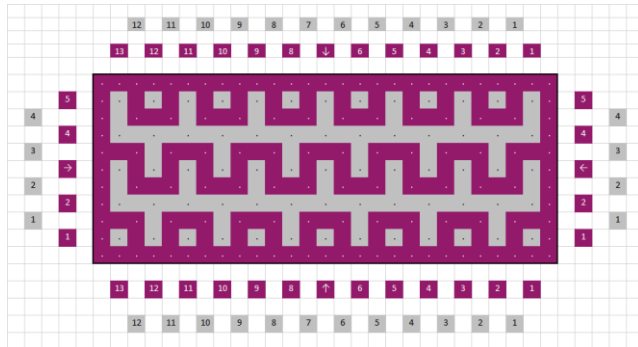
back

color 2 first row	Place the work with the back side up, the color 1 yarn is at the top left. 8 BPdc (5 across color 2A of block 1, 3 across color 2C of block 3) starting at the back in front of color 1.
Row 1a - front	*** color 2 to back, side st, *(b 1x, f 1x)* 3x, b 1x, side st
Row 1b - front	*(b 1x, f 1x)* 4x
Row 2a - back	color 2 to front, side st, *(b 1x, f 1x)* 3x, b 1x, side st
Row 2b - back	*(f 1x, b 1x)* 4x
Row 3a - front	color 2 to back, side st, *(b 1x, f 1x)* 3x, b 1x, side st
Row 3b - front	*(b 1x, f 1x)* 4x
Row 4a - back	color 2 to front, side st, *(b 1x, f 1x)* 3x, b 1x, side st
Row 4b - back	*(f 1x, b 1x)* 4x
Row 5a - front	side st, *(b 1x, f 1x)* 3x, b 1x, side st
low border in color 2	Place the work with the front side up. Start at the right side of this block. Crochet 4 BPhdc's at the sides (first one is a standing BPhdc) and 6 BPhdc's at the top all with a chain in between. Make sc's and 2 chains in between at the corners. See the tutorial. Cut the yarn. <b>Connect the yarn ends</b> to the corners of the blocks beside them before working them into the work invisibly. See the tutorial.

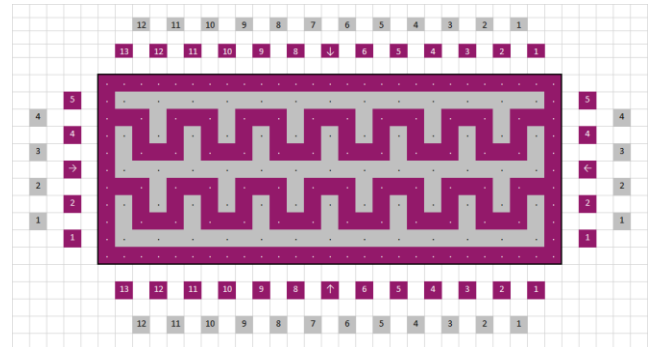
\*\*\* do BPdc's after the side st and end with a regular dc for the last side st



## Block 5



front



back

color 2 first row	Place the work with the back side up, the color 1 yarn is at the top left. 13 BPdc (3 across color 2B of block 2, 5 across color 2A of block 1, 5 across color 2D of block 4) starting at the back in front of color 1.
Row 1a - front	*** color 2 to back, side st, f 12x, side st
Row 1b - front	*(b 1x, f 1x)* 6x, b 1x
Row 2a - back	color 2 to back, side st, f 12x, side st
Row 2b - back	*(b 1x, f 1x)* 6x, b 1x
Row 3a - front	color 2 to back, side st, f 12x, side st
Row 3b - front	*(b 1x, f 1x)* 6x, b 1x
Row 4a - back	color 2 to back, side st, f 12x, side st
Row 4b - back	*(b 1x, f 1x)* 6x, b 1x
Row 5a - front	side st, f 12x, side st
low border in color 2	Place the work with the front side up. Start at the right side of this block. Crochet 4 BPhdc's at the sides (first one is a standing BPhdc) and 11 BPhdc's at the top all with a chain in between. Make sc's and 2 chains in between at the corners. See the tutorial. Cut the yarn. <b>Connect the yarn ends</b> to the corners of the blocks beside them before working them into the work invisibly. See the tutorial.

\*\*\* do BPdc's after the side st and end with a regular dc for the last side st