



THE HOOKED AND LOCKED CROCHET ALONG 2018/2020 - IN MOSAIC CROCHET TECHNIQUE PART 12-13

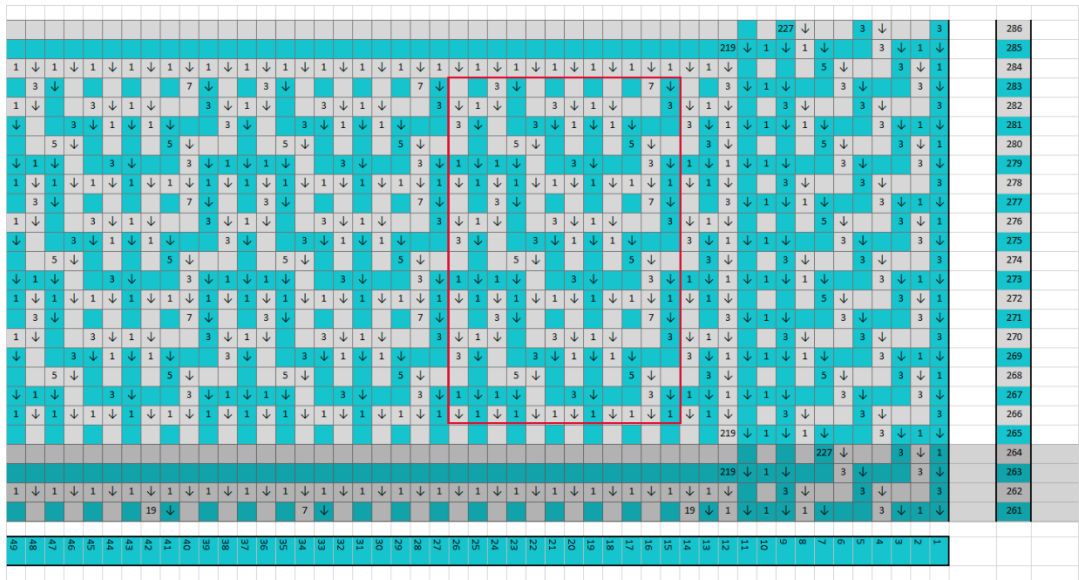


It is not allowed to copy this pattern or share this, digitally or in print, with others without my explicit permission. This is for private use only. The pattern charts, the description and all pictures are the property of Anneke Perelaer-van Komen, aka The Craftsteacher aka De Handwerkjuf. Please respect the hard work I did! Disclaimer: I am not responsible for any damage as a result of errors in the pattern

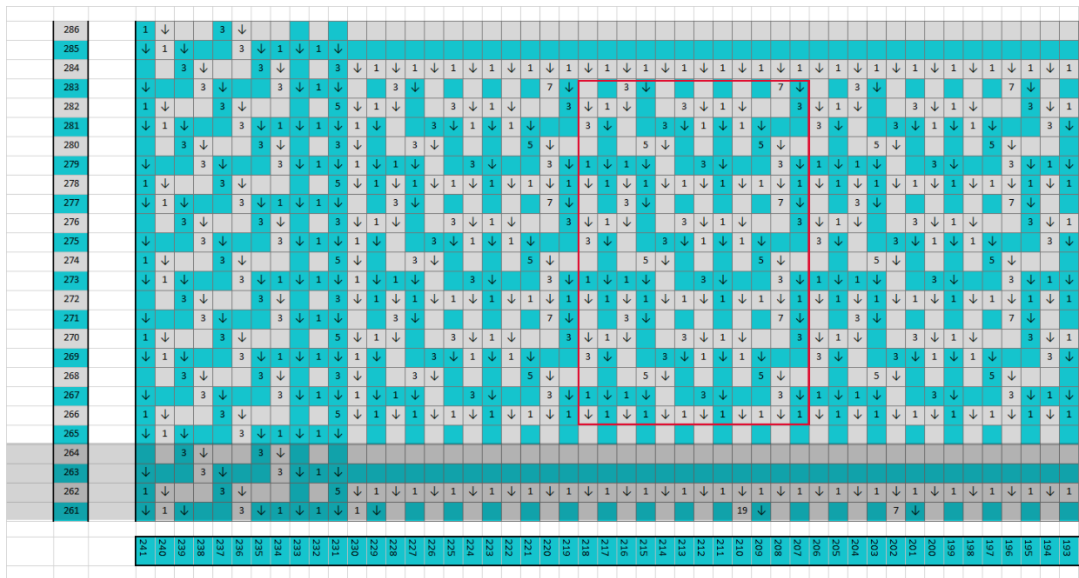


PATTERN CHARTS 'FRONT SIDE VERSION'

12 TOWERS WITH ANTENNAS



Front side version right

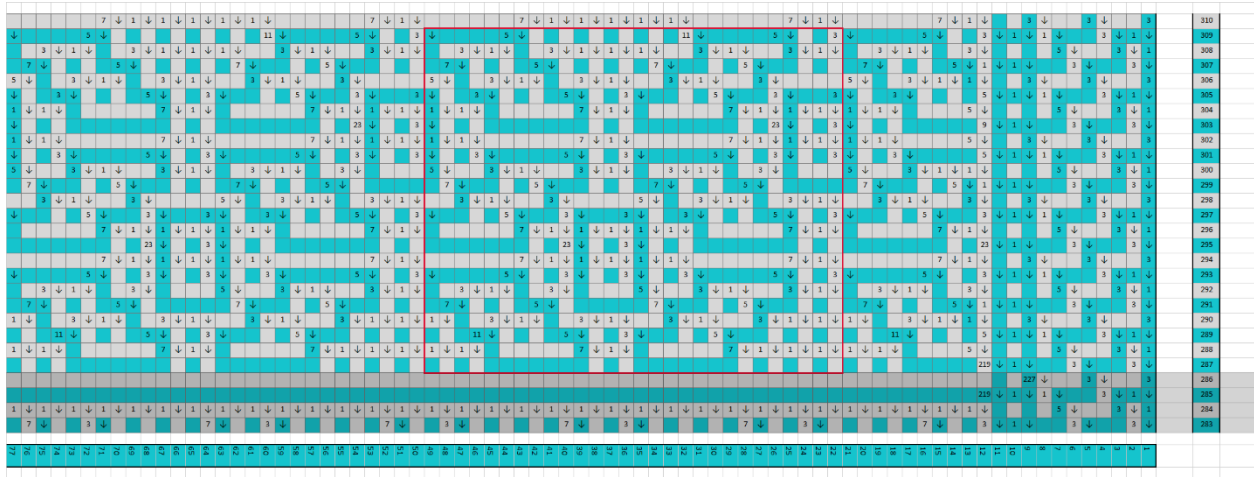


Front side version left

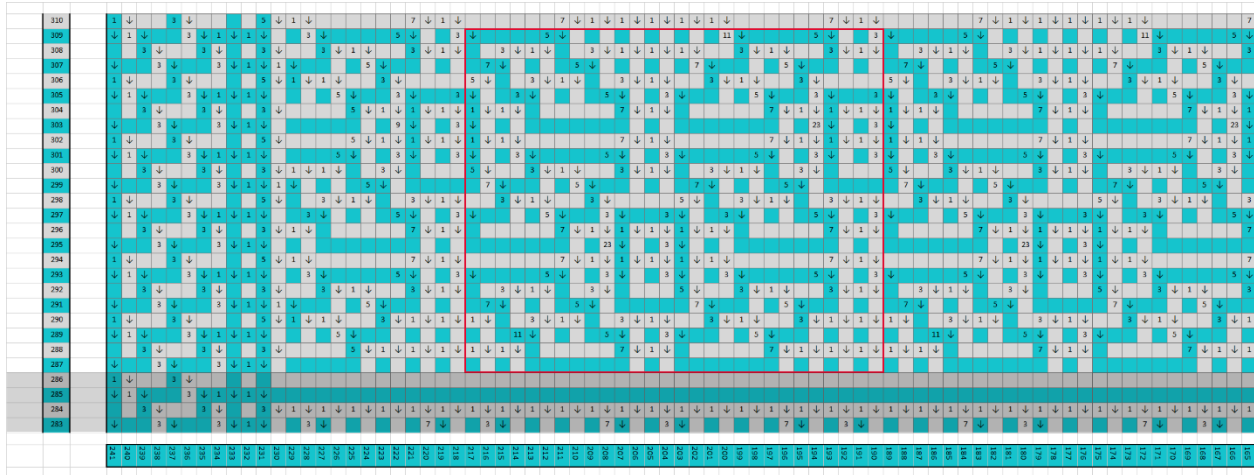
It is not allowed to copy this pattern or share this, digitally or in print, with others without my explicit permission. This is for private use only. The pattern charts, the description and all pictures are the property of Anneke Perelaer-van Komen, aka The Craftsteacher aka De Handwerkjuf. Please respect the hard work I did! Disclaimer: I am not responsible for any damage as a result of errors in the pattern



13 APPLES WITH LEAVES AND TOP BORDER



Front side version right



Front side version left

It is not allowed to copy this pattern or share this, digitally or in print, with others without my explicit permission. This is for private use only. The pattern charts, the description and all pictures are the property of Anneke Perelaer-van Komen, aka The Craftsteacher aka De Handwerkjuf. Please respect the hard work I did! Disclaimer: I am not responsible for any damage as a result of errors in the pattern



Row 300, color 2	1x 3x 5x *(1x)* 2x 3x 5x 3x 1x 3x 1x 3x 1x 3x 5x 3x 1x 3x 1x 3x 1x 3x 5x 3x 1x 3x 1x 3x 1x 3x 5x 3x 1x 3x 1x 3x 1x 3x 5x 3x 1x 3x 1x 3x 1x 3x 5x 3x 1x 3x 1x 3x 1x 3x 5x 3x 1x 3x 1x 3x 1x 3x 5x 3x *(1x)* 2x *(3x)* 3x
Row 301, color 1	swdc 1x 3x *(1x)* 2x 5x *(3x)* 3x 5x 3x 5x *(3x)* 3x 5x 3x 5x *(3x)* 3x 5x 3x 5x *(3x)* 3x 5x 3x 5x *(3x)* 3x 5x 3x 5x *(3x)* 3x 5x 3x 5x *(3x)* 3x 5x 3x 5x *(3x)* 3x 5x *(1x)* 2x 3x 1x ewdc
Row 302, color 2	*(3x)* 3x 5x *(1x)* 5x 7x 1x 7x *(1x)* 5x 7x 1x 7x *(1x)* 5x 7x 1x 7x *(1x)* 5x 7x 1x 7x *(1x)* 5x 7x 1x 7x *(1x)* 5x 7x 1x 7x *(1x)* 5x 7x 1x 7x *(1x)* 5x *(5x)* 2x 3x 1x
Row 303, color 1	swdc *(3x)* 2x 1x 9x 3x 23x 3x 23x 3x 23x 3x 23x 3x 23x 3x 23x 3x 23x 3x 9x 1x *(3x)* 2x ewdc
Row 304, color 2	1x 3x *(5x)* 2x *(1x)* 5x 7x 1x 7x *(1x)* 5x 7x 1x 7x *(1x)* 5x 7x 1x 7x *(1x)* 5x 7x 1x 7x *(1x)* 5x 7x 1x 7x *(1x)* 5x 7x 1x 7x *(1x)* 5x 7x 1x 7x *(1x)* 5x 5x *(3x)* 3x
Row 305, color 1	swdc 1x 3x *(1x)* 2x 5x *(3x)* 3x 5x 3x 5x *(3x)* 3x 5x 3x 5x *(3x)* 3x 5x 3x 5x *(3x)* 3x 5x 3x 5x *(3x)* 3x 5x 3x 5x *(3x)* 3x 5x 3x 5x *(3x)* 3x 5x 3x 5x *(3x)* 3x 5x *(1x)* 2x 3x 1x ewdc
Row 306, color 2	*(3x)* 3x *(1x)* 2x 3x 5x 3x 1x 3x 1x 3x 1x 3x 5x 3x 1x 3x 1x 3x 1x 3x 5x 3x 1x 3x 1x 3x 1x 3x 5x 3x 1x 3x 1x 3x 1x 3x 5x 3x 1x 3x 1x 3x 1x 3x 5x 3x 1x 3x 1x 3x 1x 3x 5x 3x 1x 3x 1x 3x 1x 3x 5x 3x *(1x)* 2x 5x 3x 1x
Row 307, color 1	swdc *(3x)* 2x *(1x)* 2x 5x 7x 5x 7x 5x 7x 5x 7x 5x 7x 5x 7x 5x 7x 5x 7x 5x 7x 5x 7x 5x 7x 5x 7x 5x 5x 7x 5x 7x 5x *(1x)* 2x *(3x)* 2x ewdc
Row 308, color 2	1x 3x 5x 3x 1x 3x 1x 3x 1x 3x *(1x)* 3x 3x 1x 3x 1x 3x 1x 3x *(1x)* 3x 3x 1x 3x 1x 3x 1x 3x *(1x)* 3x 3x 1x 3x 1x 3x 1x 3x *(1x)* 3x 3x 1x 3x 1x 3x 1x 3x *(1x)* 3x 3x 1x 3x 1x 3x 1x 3x *(1x)* 3x 3x 1x 3x 1x 3x 1x 3x *(1x)* 3x 3x 1x 3x 1x 3x 1x *(3x)* 4x
Row 309, color 1	swdc 1x 3x *(1x)* 2x 3x 5x 3x 5x 11x 5x 3x 5x 11x 5x 3x 5x 11x 5x 3x 5x 11x 5x 3x 5x 11x 5x 3x 5x 11x 5x 3x 5x 11x 5x 3x 5x 3x *(1x)* 2x 3x 1x ewdc
Row 310, color 2	*(3x)* 3x 1x 7x 1x 7x *(1x)* 5x 7x 1x 7x *(1x)* 5x 7x 1x 7x *(1x)* 5x 7x 1x 7x *(1x)* 5x 7x 1x 7x *(1x)* 5x 7x 1x 7x *(1x)* 5x 7x 1x 7x *(1x)* 5x 7x 1x 7x 1x 5x 3x 1x
Row 311, color 1	swdc *(3x)* 2x 1x 219x 1x *(3x)* 2x ewdc

It is not allowed to copy this pattern or share this, digitally or in print, with others without my explicit permission. This is for private use only. The pattern charts, the description and all pictures are the property of Anneke Perelaer-van Komen, aka The Craftsteacher aka De Handwerkjuf. Please respect the hard work I did! Disclaimer: I am not responsible for any damage as a result of errors in the pattern



Row 312, color 2	1x 3x 227x *(3x)* 2x
Row 313, color 1	swdc 1x 3x *(1x)* 114x 3x 1x ewdc
Row 314, color 2	*(3x)* 2x 227x 3x 1x
Row 315, color 1	swdc *(3x)* 59x 3x ewdc
Row 316, color 2	1x *(3x)* 60x
Row 317, color 1	swdc 1x *(3x)* 59x 1x ewdc
Row 318, color 2	*(3x)* 60x 1x
Row 319, color 1	swdc *(3x)* 59x 3x ewdc
Row 320, color 2	1x *(3x)* 60x
Row 321, color 1	swdc 1x *(3x)* 59x 1x ewdc

SURROUNDING BORDER

There is an elaborate tutorial with lots's of pictures on my website about making the border:

<https://www.thecraftsteacher.com/en/crochet/crochet-tutorials/mosaic-crochet/folded-border-for-mosaic-crochet/>.

Make 4 increase rows with sc's around the blanket. Increase 2 stitches at each corner, 1 stitch at one side and 1 stitch at the other side of the work. Do this by making 2 sc's into the last stitch of a side and 2 sc's into the first stitch of the next side.

When making the sc's into the sides with the starting and ending threads, you will do 1 sc in each row.

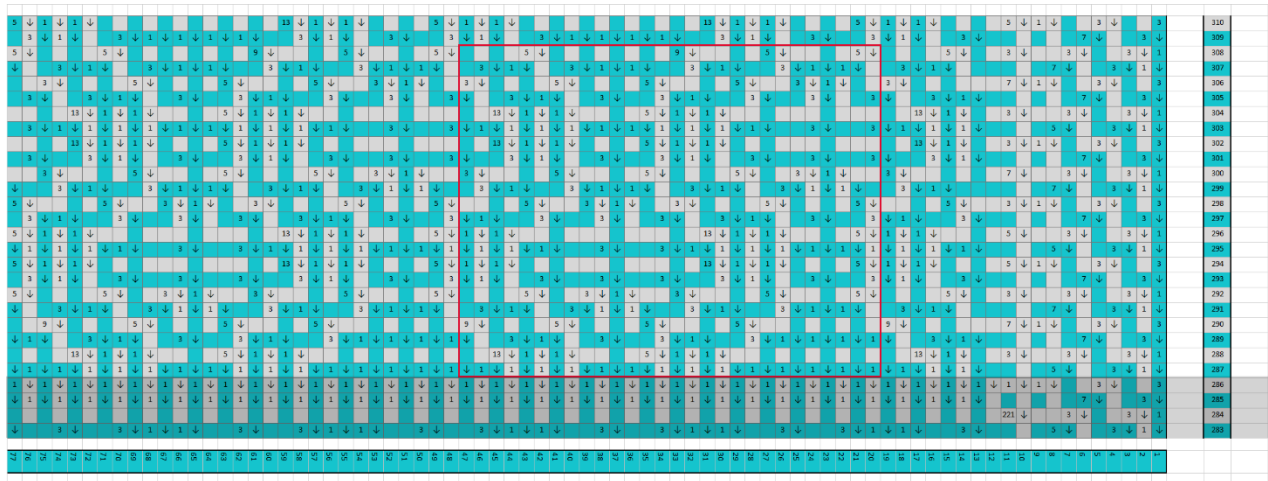
After that do 4 rows with decreases in the corners. Do this by making 1 sc into the last 2 stitches of a side, and 1 sc into the first 2 stitches of the next side. If you don't know how to do this, then take a look at the tutorial.

Make knots with the starting and ending threads. I knot the threads of color 1 and 2 together that are closest to each other. After that you can cut them to about 5 cm/ 2 inch tall. When you are finished with crocheting the border, hide the threads into the border. Pin the border to the back of the blanket, so that it stays in place neatly during sewing and sew it to the back of the blanket. Pick up threads that are on the backside of the blanket, so it won't show to the front side. I just used the yarn that I crocheted with, but use sewing thread instead if your yarn is not suitable for sewing.

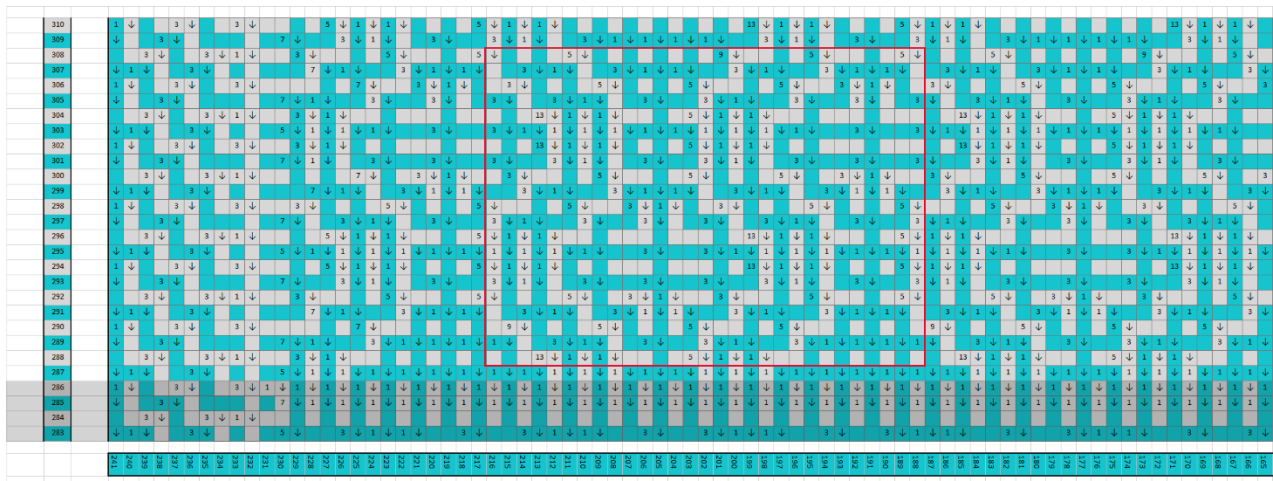
It is not allowed to copy this pattern or share this, digitally or in print, with others without my explicit permission. This is for private use only. The pattern charts, the description and all pictures are the property of Anneke Perelaer-van Komen, aka The Craftsteacher aka De Handwerkjuf. Please respect the hard work I did! Disclaimer: I am not responsible for any damage as a result of errors in the pattern



13 APPLES WITH LEAVES AND TOP BORDER

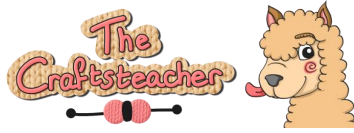


Back side version right



Back side version left

It is not allowed to copy this pattern or share this, digitally or in print, with others without my explicit permission. This is for private use only. The pattern charts, the description and all pictures are the property of Anneke Perelaer-van Komen, aka The Craftsteacher aka De Handwerkjuf. Please respect the hard work I did! Disclaimer: I am not responsible for any damage as a result of errors in the pattern



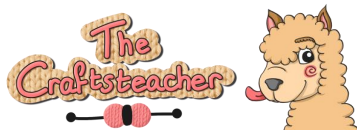
Row 279, color 1	swdc 1x 3x 9x 3x 7x 3x 7x 3x 7x 3x 7x 3x 7x 3x 7x 3x 7x 3x 7x 3x 7x 3x 7x 3x 7x 3x 7x 3x 7x 3x 7x 3x 7x 3x 7x 3x 7x 3x 7x 3x 9x 3x 1x ewdc
Row 280, color 2	1x *(3x)* 4x 1x 3x 1x 3x 1x 3x 1x 3x 1x 3x 1x 3x 1x 3x 1x 3x 1x 3x 1x 3x 1x 3x 1x 3x 1x 3x 1x 3x 1x 3x 1x 1x 3x 1x 3x 1x 3x 1x 3x 1x 3x 1x 3x 1x 3x 1x 3x 1x 3x 1x 3x 1x 3x 1x 3x 1x 3x 1x 3x 1x 3x 1x 3x 1x 3x 1x 3x 1x 3x 1x 3x 1x *(3x)* 2x 1x *(3x)* 2x
Row 281, color 1	swdc 3x 9x 7x 3x 7x 3x 7x 3x 7x 3x 7x 3x 7x 3x 7x 3x 7x 3x 7x 3x 7x 3x 7x 3x 7x 3x 7x 3x 7x 3x 7x 3x 7x 3x 7x 3x 7x 3x 7x 9x 3x ewdc
Row 282, color 2	*(3x)* 2x 1x *(5x)* 37x *(3x)* 2x 1x
Row 283, color 1	swdc 1x 3x 5x 3x *(1x)* 2x *(3x)* 2x *(1x)* 2x *(3x)* 2x *(1x)* 2x *(3x)* 2x *(1x)* 2x *(3x)* 2x *(1x)* 2x *(3x)* 2x *(1x)* 2x *(3x)* 2x *(1x)* 2x *(3x)* 2x *(1x)* 2x *(3x)* 2x *(1x)* 2x *(3x)* 2x *(1x)* 2x *(3x)* 2x *(1x)* 2x *(3x)* 2x *(1x)* 2x *(3x)* 2x *(1x)* 2x *(3x)* 2x *(1x)* 2x *(3x)* 2x *(1x)* 2x *(3x)* 2x *(1x)* 2x *(3x)* 2x *(1x)* 2x *(3x)* 2x *(1x)* 2x 3x 5x 3x 1x ewdc
Row 284, color 2	1x *(3x)* 2x 221x 1x *(3x)* 2x
Row 285, color 1	swdc 3x 7x *(1x)* 108x 7x 3x ewdc
Row 286, color 2	*(3x)* 2x *(1x)* 112x *(3x)* 2x 1x
Row 287, color 1	swdc 1x 3x 5x *(1x)* 108x 5x 3x 1x ewdc
Row 288, color 2	1x *(3x)* 3x 1x 13x *(1x)* 2x 5x *(1x)* 2x 13x *(1x)* 2x 5x *(1x)* 2x 13x *(1x)* 2x 5x *(1x)* 2x 13x *(1x)* 2x 5x *(1x)* 2x 13x *(1x)* 2x 5x *(1x)* 2x 13x *(1x)* 2x 5x *(1x)* 2x 13x *(1x)* 2x 5x *(1x)* 2x 13x 1x 3x 1x *(3x)* 2x
Row 289, color 1	swdc 3x 7x 1x 3x *(1x)* 4x 3x 1x *(3x)* 2x 1x 3x *(1x)* 4x 3x 1x *(3x)* 2x 1x 3x *(1x)* 4x 3x 1x *(3x)* 2x 1x 3x *(1x)* 4x 3x 1x *(3x)* 2x 1x 3x *(1x)* 4x 3x 1x *(3x)* 2x 1x 3x *(1x)* 4x 3x 1x *(3x)* 2x 1x 3x *(1x)* 4x 3x 1x *(3x)* 2x 1x 3x *(1x)* 4x 3x 1x 7x 3x ewdc
Row 290, color 2	*(3x)* 2x 1x 7x 9x *(5x)* 3x 9x *(5x)* 3x 9x *(5x)* 3x 9x *(5x)* 3x 9x *(5x)* 3x 9x *(5x)* 3x 9x *(5x)* 3x 9x 7x *(3x)* 2x 1x
Row 291, color 1	swdc 1x 3x 7x 1x 3x *(1x)* 2x 3x 1x 3x *(1x)* 2x 3x 1x 3x *(1x)* 2x 3x 1x 3x *(1x)* 2x 3x 1x 3x *(1x)* 2x 3x 1x 3x *(1x)* 2x 3x 1x 3x *(1x)* 2x 3x 1x 3x *(1x)* 2x 3x 1x 3x *(1x)* 2x 3x 1x 3x *(1x)* 2x 3x 1x 3x *(1x)* 2x 3x 1x 3x *(1x)* 2x 3x 1x 7x 3x 1x ewdc

It is not allowed to copy this pattern or share this, digitally or in print, with others without my explicit permission. This is for private use only. The pattern charts, the description and all pictures are the property of Anneke Perelaer-van Komen, aka The Craftsteacher aka De Handwerkjuf. Please respect the hard work I did! Disclaimer: I am not responsible for any damage as a result of errors in the pattern.



Row 303, color 1	swdc 1x 3x 5x *(1x)* 3x *(3x)* 2x *(1x)* 10x *(3x)* 2x *(1x)* 10x *(3x)* 2x *(1x)* 10x *(3x)* 2x *(1x)* 10x *(3x)* 2x *(1x)* 10x *(3x)* 2x *(1x)* 10x *(3x)* 2x *(1x)* 10x *(3x)* 2x *(1x)* 3x 5x 3x 1x ewdc
Row 304, color 2	1x *(3x)* 3x 1x 13x *(1x)* 2x 5x *(1x)* 2x 13x *(1x)* 2x 5x *(1x)* 2x 13x *(1x)* 2x 5x *(1x)* 2x 13x *(1x)* 2x 5x *(1x)* 2x 13x *(1x)* 2x 5x *(1x)* 2x 13x *(1x)* 2x 5x *(1x)* 2x 13x 1x 3x 1x *(3x)* 2x
Row 305, color 1	swdc 3x 7x 1x *(3x)* 4x 1x *(3x)* 2x 1x *(3x)* 4x 1x *(3x)* 2x 1x *(3x)* 4x 1x *(3x)* 2x 1x *(3x)* 4x 1x *(3x)* 2x 1x *(3x)* 4x 1x *(3x)* 2x 1x *(3x)* 4x 1x 7x 3x ewdc
Row 306, color 2	*(3x)* 2x 1x 7x 3x 1x 3x *(5x)* 3x 3x 1x 3x *(5x)* 3x 3x 1x 3x *(5x)* 3x 3x 1x 3x *(5x)* 3x 3x 1x 3x 7x *(3x)* 2x 1x
Row 307, color 1	swdc 1x 3x 7x 1x 3x *(1x)* 2x 3x 1x 3x *(1x)* 2x 3x 1x 3x *(1x)* 2x 3x 1x 3x *(1x)* 2x 3x 1x 3x *(1x)* 2x 3x 1x 3x *(1x)* 2x 3x 1x 3x *(1x)* 2x 3x 1x 3x *(1x)* 2x 3x 1x 7x 3x 1x ewdc
Row 308, color 2	1x *(3x)* 3x *(5x)* 3x 9x *(5x)* 3x 9x *(5x)* 3x 9x *(5x)* 3x 9x *(5x)* 3x 9x *(5x)* 3x 3x 1x *(3x)* 2x
Row 309, color 1	swdc 3x 7x 3x 1x *(3x)* 2x 1x 3x *(1x)* 4x 3x 1x *(3x)* 2x 1x 3x *(1x)* 4x 3x 1x *(3x)* 2x 1x 3x *(1x)* 4x 3x 1x *(3x)* 2x 1x 3x *(1x)* 4x 3x 1x *(3x)* 2x 1x 3x *(1x)* 4x 3x 1x *(3x)* 2x 1x 3x *(1x)* 4x 3x 1x *(3x)* 2x 1x 3x 7x 3x ewdc
Row 310, color 2	*(3x)* 2x 1x 5x *(1x)* 2x 5x *(1x)* 2x 13x *(1x)* 2x 5x *(1x)* 2x 13x *(1x)* 2x 5x *(1x)* 2x 13x *(1x)* 2x 5x *(1x)* 2x 13x *(1x)* 2x 5x *(1x)* 2x 13x *(1x)* 2x 5x *(1x)* 2x 13x *(1x)* 2x 5x *(1x)* 2x 13x *(1x)* 2x 5x *(3x)* 2x 1x
Row 311, color 1	swdc 1x 3x 5x *(1x)* 108x 5x 3x 1x ewdc
Row 312, color 2	1x *(3x)* 2x *(1x)* 112x *(3x)* 2x
Row 313, color 1	swdc 3x 231x 3x ewdc
Row 314, color 2	*(3x)* 2x *(1x)* 112x *(3x)* 2x 1x
Row 315, color 1	swdc 1x *(3x)* 59x 1x ewdc
Row 316, color 2	1x *(3x)* 60x
Row 317, color 1	swdc *(3x)* 59x 3x ewdc
Row 318, color 2	*(3x)* 60x 1x

It is not allowed to copy this pattern or share this, digitally or in print, with others without my explicit permission. This is for private use only. The pattern charts, the description and all pictures are the property of Anneke Perelaer-van Komen, aka The Craftsteacher aka De Handwerkjuf. Please respect the hard work I did! Disclaimer: I am not responsible for any damage as a result of errors in the pattern.



Row 319, color 1	swdc 1x *(3x)* 59x 1x ewdc
Row 320, color 2	1x *(3x)* 60x
Row 321, color 1	swdc *(3x)* 59x 3x ewdc

It is not allowed to copy this pattern or share this, digitally or in print, with others without my explicit permission. This is for private use only. The pattern charts, the description and all pictures are the property of Anneke Perelaer-van Komen, aka The Craftteacher aka De Handwerkjuf. Please respect the hard work I did! Disclaimer: I am not responsible for any damage as a result of errors in the pattern.