



THE HOOKED AND LOCKED CROCHET ALONG 2018/2020 - IN MOSAIC CROCHET TECHNIQUE PART 7-8



It is not allowed to copy this pattern or share this, digitally or in print, with others without my explicit permission. This is for private use only. The pattern charts, the description and all pictures are the property of Anneke Perelaer-van Komen, aka The Craftsteacher aka De Handwerkjuf. Please respect the hard work I did! Disclaimer: I am not responsible for any damage as a result of errors in the pattern.



PATTERN CHARTS 'FRONT SIDE VERSION'

7 SUNSHINE

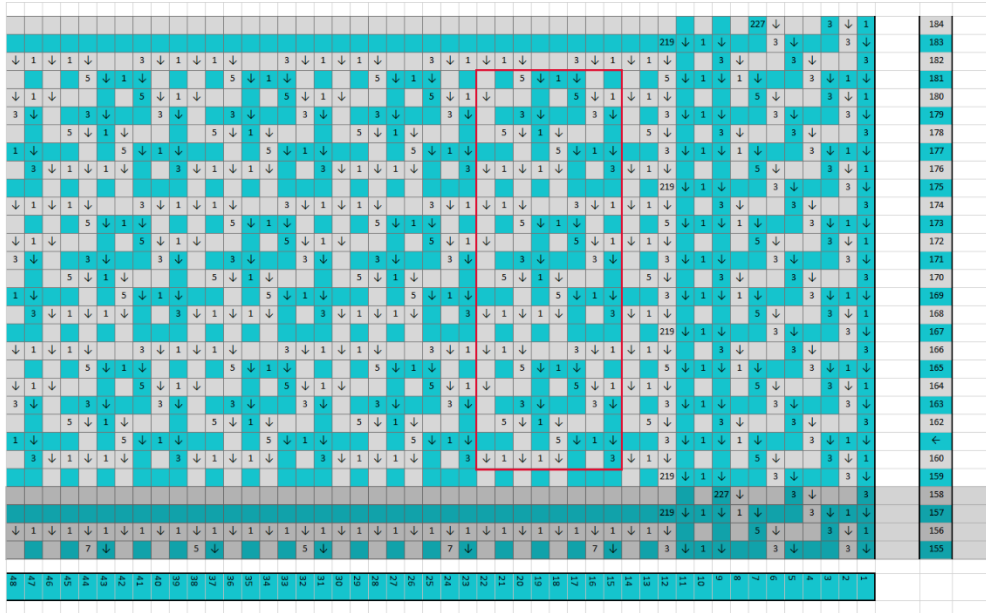
Front side version right

Front side version left

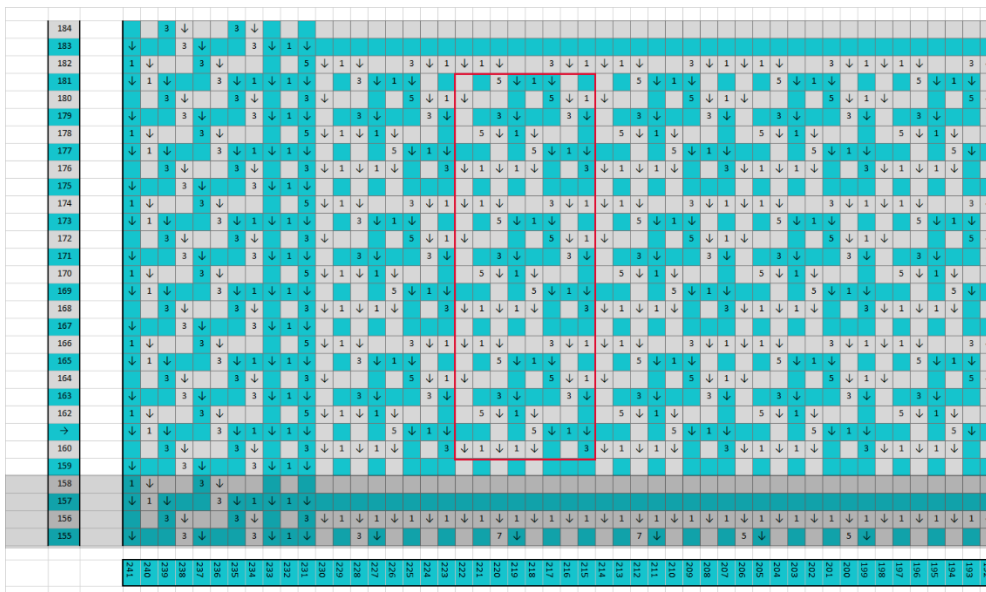
It is not allowed to copy this pattern or share this, digitally or in print, with others without my explicit permission. This is for private use only. The pattern charts, the description and all pictures are the property of Anneke Perelaer-van Komen, aka The Craftsteacher aka De Handwerkjuf. Please respect the hard work I did! Disclaimer: I am not responsible for any damage as a result of errors in the pattern.



8 LITTLE FISHIES



Front side version right



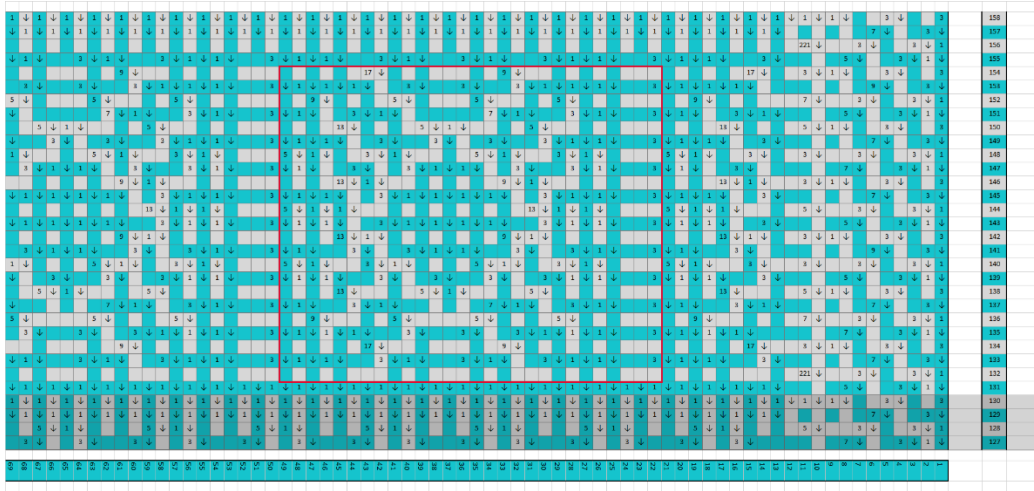
Front side version left

It is not allowed to copy this pattern or share this, digitally or in print, with others without my explicit permission. This is for private use only. The pattern charts, the description and all pictures are the property of Anneke Perelaer-van Komen, aka The Craftsteacher aka De Handwerkjuf. Please respect the hard work I did! Disclaimer: I am not responsible for any damage as a result of errors in the pattern.

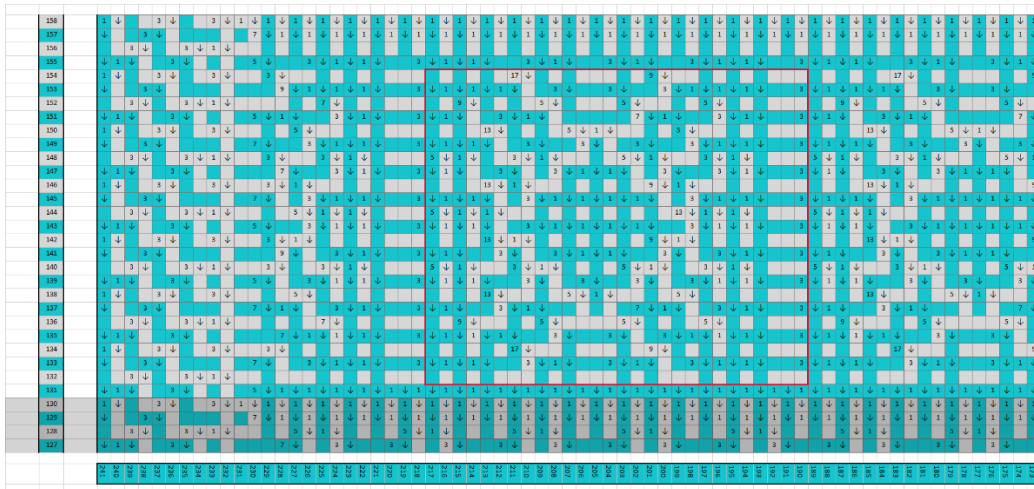


PATTERN CHARTS 'BACK SIDE VERSION'

7 SUNSHINE

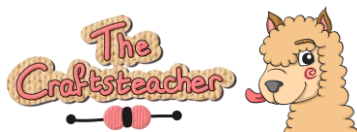


Back side version right



Back side version left

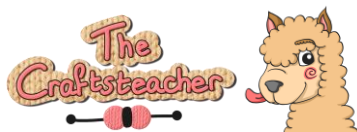
It is not allowed to copy this pattern or share this, digitally or in print, with others without my explicit permission. This is for private use only. The pattern charts, the description and all pictures are the property of Anneke Perelaer-van Komen, aka The Craftsteacher aka De Handwerkjuf. Please respect the hard work I did! Disclaimer: I am not responsible for any damage as a result of errors in the pattern.



PATTERN DESCRIPTION 'BACK SIDE' -VERSION

Row 131, color 1	swdc 1x 3x 5x *(1x)* 108x 5x 3x 1x ewdc
Row 132, color 2	1x *(3x)* 2x 221x 1x *(3x)* 2x
Row 133, color 1	swdc 3x 7x 3x *(1x)* 2x 3x *(1x)* 2x 3x 1x 3x 1x 3x *(1x)* 2x 3x *(1x)* 2x 3x 1x 3x 1x 3x *(1x)* 2x 3x *(1x)* 2x 3x 1x 3x 1x 3x *(1x)* 2x 3x *(1x)* 2x 3x 1x 3x 1x 3x *(1x)* 2x 3x *(1x)* 2x 3x 1x 3x 1x 3x *(1x)* 2x 3x *(1x)* 2x 3x 1x 3x 1x 3x *(1x)* 2x 3x *(1x)* 2x 3x 1x 3x 1x 3x *(1x)* 2x 3x *(1x)* 2x 3x 7x 3x ewdc
Row 134, color 2	*(3x)* 2x 1x 3x 17x 9x 17x 9x 17x 9x 17x 9x 17x 9x 17x 9x 17x 9x 17x *(3x)* 3x 1x
Row 135, color 1	swdc 1x 3x 7x *(1x)* 3x 3x *(1x)* 3x *(3x)* 3x *(1x)* 3x 3x *(1x)* 3x *(3x)* 3x *(1x)* 3x 3x *(1x)* 3x *(3x)* 3x *(1x)* 3x 3x *(1x)* 3x *(3x)* 3x *(1x)* 3x 3x *(1x)* 3x *(3x)* 3x *(1x)* 3x 3x *(1x)* 3x *(3x)* 3x *(1x)* 3x 3x *(1x)* 3x *(3x)* 3x *(1x)* 3x 3x *(1x)* 3x 7x 3x 1x ewdc
Row 136, color 2	1x *(3x)* 2x 7x 9x *(5x)* 3x 9x *(5x)* 3x 9x *(5x)* 3x 9x *(5x)* 3x 9x *(5x)* 3x 9x *(5x)* 3x 9x *(5x)* 3x 9x 7x 1x *(3x)* 2x
Row 137, color 1	swdc 3x 7x 1x 3x 1x 3x 1x 3x 1x 7x 1x 3x 1x 3x 1x 3x 1x 7x 1x 3x 1x 3x 1x 3x 1x 7x 1x 3x 1x 3x 1x 3x 1x 7x 1x 3x 1x 3x 1x 3x 1x 7x 1x 3x 1x 3x 1x 3x 1x 7x 1x 3x 1x 3x 1x 3x 1x 7x 1x 3x 1x 3x 1x 3x 1x 7x 3x ewdc
Row 138, color 2	*(3x)* 2x 1x 5x 13x 5x 1x 5x 13x 5x 1x 5x 13x 5x 1x 5x 13x 5x 1x 5x 13x 5x 1x 5x 13x 5x 1x 5x 13x 5x 1x 5x 13x 5x *(3x)* 2x 1x
Row 139, color 1	swdc 1x 3x 5x 3x *(1x)* 2x 3x *(1x)* 2x *(3x)* 4x *(1x)* 2x 3x *(1x)* 2x *(3x)* 4x *(1x)* 2x 3x *(1x)* 2x *(3x)* 4x *(1x)* 2x 3x *(1x)* 2x *(3x)* 4x *(1x)* 2x 3x *(1x)* 2x *(3x)* 4x *(1x)* 2x 3x *(1x)* 2x *(3x)* 4x *(1x)* 2x 3x *(1x)* 2x *(3x)* 4x *(1x)* 2x 3x *(1x)* 2x 3x 5x 3x 1x ewdc
Row 140, color 2	1x *(3x)* 4x 1x 5x 1x 3x 1x 5x 1x 3x 1x 5x 1x 3x 1x 5x 1x 3x 1x 5x 1x 3x 1x 5x 1x 3x 1x 5x 1x 3x 1x 5x 1x 3x 1x 5x 1x 3x 1x 5x 1x 3x 1x 5x 1x 3x 1x 5x 1x 3x 1x 5x 1x 3x 1x 5x 1x 3x 1x 5x 1x *(3x)* 2x 1x *(3x)* 2x

It is not allowed to copy this pattern or share this, digitally or in print, with others without my explicit permission. This is for private use only. The pattern charts, the description and all pictures are the property of Anneke Perelaer-van Komen, aka The Craftteacher aka De Handwerkjuf. Please respect the hard work I did! Disclaimer: I am not responsible for any damage as a result of errors in the pattern.



Row 149, color 1	swdc 3x 7x 3x *(1x)* 2x 3x *(1x)* 2x *(3x)* 4x *(1x)* 2x 3x *(1x)* 2x *(3x)* 4x *(1x)* 2x 3x *(1x)* 2x *(3x)* 4x *(1x)* 2x 3x *(1x)* 2x *(3x)* 4x *(1x)* 2x 3x *(1x)* 2x *(3x)* 4x *(1x)* 2x 3x *(1x)* 2x *(3x)* 4x *(1x)* 2x 3x *(1x)* 2x *(3x)* 4x *(1x)* 2x 3x *(1x)* 2x 3x 7x 3x ewdc
Row 150, color 2	*(3x)* 2x 1x 5x 13x 5x 1x 5x 13x 5x 1x 5x 13x 5x 1x 5x 13x 5x 1x 5x 13x 5x 1x 5x 13x 5x 1x 5x 13x 5x 1x 5x 13x 5x *(3x)* 2x 1x
Row 151, color 1	swdc 1x 3x 5x 1x 3x 1x 3x 1x 3x 1x 7x 1x 3x 1x 3x 1x 3x 1x 7x 1x 3x 1x 3x 1x 3x 1x 7x 1x 3x 1x 3x 1x 3x 1x 7x 1x 3x 1x 3x 1x 3x 1x 7x 1x 3x 1x 3x 1x 3x 1x 7x 1x 3x 1x 3x 1x 3x 1x 7x 1x 3x 1x 3x 1x 3x 1x 5x 3x 1x ewdc
Row 152, color 2	1x *(3x)* 2x 7x 9x *(5x)* 3x 9x *(5x)* 3x 9x *(5x)* 3x 9x *(5x)* 3x 9x *(5x)* 3x 9x *(5x)* 3x 9x *(5x)* 3x 9x 7x 1x *(3x)* 2x
Row 153, color 1	swdc 3x 9x *(1x)* 3x 3x *(1x)* 3x *(3x)* 3x *(1x)* 3x 3x *(1x)* 3x *(3x)* 3x *(1x)* 3x 3x *(1x)* 3x *(3x)* 3x *(1x)* 3x 3x *(1x)* 3x *(3x)* 3x *(1x)* 3x 3x *(1x)* 3x *(3x)* 3x *(1x)* 3x 3x *(1x)* 3x *(3x)* 3x *(1x)* 3x 3x *(1x)* 3x *(3x)* 3x *(1x)* 3x 3x *(1x)* 3x 9x 3x ewdc
Row 154, color 2	*(3x)* 2x 1x 3x 17x 9x 17x 9x 17x 9x 17x 9x 17x 9x 17x 9x 17x 9x 17x *(3x)* 3x 1x
Row 155, color 1	swdc 1x 3x 5x 3x *(1x)* 2x 3x *(1x)* 2x 3x 1x 3x 1x 3x *(1x)* 2x 3x *(1x)* 2x 3x 1x 3x 1x 3x *(1x)* 2x 3x *(1x)* 2x 3x 1x 3x 1x 3x *(1x)* 2x 3x *(1x)* 2x 3x 1x 3x 1x 3x *(1x)* 2x 3x *(1x)* 2x 3x 1x 3x 1x 3x *(1x)* 2x 3x *(1x)* 2x 3x 1x 3x 1x 3x *(1x)* 2x 3x *(1x)* 2x 3x 1x 3x 1x 3x *(1x)* 2x 3x *(1x)* 2x 3x 5x 3x 1x ewdc
Row 156, color 2	1x *(3x)* 2x 221x 1x *(3x)* 2x
Row 157, color 1	swdc 3x 7x *(1x)* 108x 7x 3x ewdc
Row 158, color 2	*(3x)* 2x *(1x)* 112x *(3x)* 2x 1x
Row 159, color 1	swdc 1x 3x 5x *(1x)* 108x 5x 3x 1x ewdc
Row 160, color 2	1x *(3x)* 2x *(7x)* 27x 5x 1x *(3x)* 2x
Row 161, color 1	swdc 3x 7x 1x 5x 1x 5x 1x 5x 1x 5x 1x 5x 1x 5x 1x 5x 1x 5x 1x 5x 1x 5x 1x 5x 1x 5x 1x 5x 1x 5x 1x 5x 1x 5x 1x 5x 1x 5x 1x 5x 1x 5x 1x 5x 1x 5x 1x 5x 1x 5x 1x 5x 1x 5x 1x 5x 1x 5x 7x 3x ewdc
Row 162, color 2	*(3x)* 2x 1x 7x 1x 5x 1x 5x 1x 5x 1x 5x 1x 5x 1x 5x 1x 5x 1x 5x 1x 5x 1x 5x 1x 5x 1x 5x 1x 5x 1x 5x 1x 5x 1x 5x 1x 5x 1x 5x 1x 5x 1x 5x 1x 5x 1x 5x 1x 5x 1x 5x 1x 5x 1x 5x 1x *(3x)* 3x 1x

It is not allowed to copy this pattern or share this, digitally or in print, with others without my explicit permission. This is for private use only. The pattern charts, the description and all pictures are the property of Anneke Perelaer-van Komen, aka The Craftsteacher aka De Handwerkjuf. Please respect the hard work I did! Disclaimer: I am not responsible for any damage as a result of errors in the pattern.

